



TRI-CHEM



Anti-Slip Hi-Traction® Safety Products

Tri-Chem Corporation | 800.456.6255 | tri-chem.com


Anti-Slip Hi-Traction® STEP COVERS



TRI-CHEM



**Tri-Chem Hi-Traction® and HiGlo-Traction®
Step Covers offer a superior alternative to temporary
paints and tapes.**

Designed with a long-lasting, aggressive gritted surface, our products are proven to provide Anti-Slip protection in a variety of environments. The “” shaped design wraps over the leading edge of your step to provide Anti-Slip protection where it is needed most.

Anti-Slip Hi-Traction® STEP COVERS

Tri-Chem Hi-Traction® and HiGlo-Traction® Step Covers
Safely leading the way to eliminate costly slips-and-falls.

Design

Most slips occur on the leading edge of the stair step, especially when the metal, wood or concrete surface becomes worn or rounded. Water, dust, or oil on the step further accentuates the problem. Tri-Chem Hi-Traction® Step Covers are designed to cover the leading edge, providing excellent traction, even in adverse conditions.

Coefficient of Friction

The Step Cover's unique surface nearly doubles both the OSHA's 0.5 and the ADA's 0.6 guidelines for Coefficient of Friction values as confirmed in independent lab testing using the Mark II Model of the Brungraber slip tester. Even in wet or oily conditions, our Safety Covers greatly exceed these guidelines.

Choose Your Grade

We offer 6 different grades of grit, depending on your application. These include Super Coarse (for extreme conditions), Extra Coarse (for offshore and heavy duty use), Coarse (for industrial environments), Fine (for commercial buildings), Extra Fine (for residential steps) and Super Fine (for showers and barefoot areas).

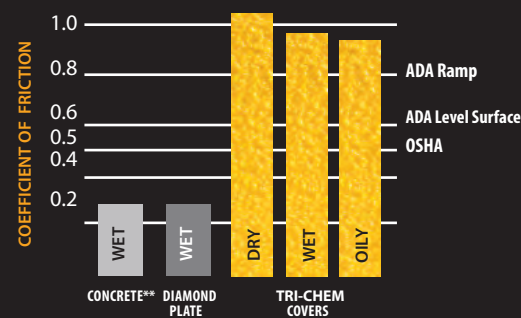
Choose Your Colors

Select from a wide range of standard, premium, or custom colors. Please refer to our Standard and Premium Colors literature page.

Glow-in-the-Dark

Tri-Chem also offers HiGlo-Traction® Covers in photoluminescent which are visible for several hours after the light source is removed.

We Exceed OSHA and ADA Standards



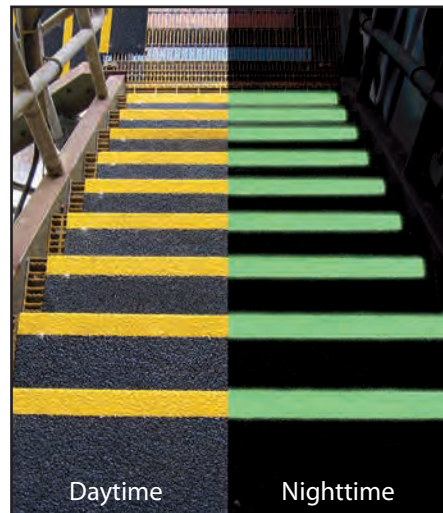
* Measured with the Mark II model of the Brungraber Slip-tester

** Representative values which vary with the age and condition of the surface

Tri-Chem incorporates Fused Alumina as the aggregate in it's Antislip surface. This abrasive is characterized by a sharp edged particle shape and measures (9.0) on the Mohs' Hardness Scale for abrasives. This ranks just below Diamond (10). Comparatively, most tapes and paints incorporate quartz or silica, which are synonyms for sand, as the aggregate. These only rank in the 6-7 range on the scale.

Two-Tone Colors Add Visibility

For added safety, our two-tone step Covers call attention to the edge of the step. A contrast between the step edge and the back of the tread below provides good definition and clear visibility. For step depths greater than 3 inches, we strongly recommend using our two-tone color configuration.



Descriptive Markings and Logos

We can incorporate logos, Personal Protection Equipment (PPE) symbols, escape route information, and directional markings on our Covers. Our Tri-Chem Descriptive Marking is inlaid and will last for the life of the product.

Easy Installation and Cleaning

Tri-Chem Hi-Traction® and HiGlo-Traction® Covers are not load bearing. They are prefabricated, retrofit Covers which are quickly and easily installed over existing surfaces, such as concrete, wood, metal plate and grating using mechanical fasteners, adhesive or tack welding. Installation is quick, easy and requires little to no downtime. Cleanup is easy with a non-solvent cleaner and a stiff brush. Refer to our cleaning and installation insert for complete details.

Physical Properties

Please refer to our General Properties Insert for complete physical properties and mechanical specifications.

STEPS ONLY - Vertical lip wraps over leading edge of stairs where most slips and falls occur.

Shape Options

"—" Shape Design



Base Materials

- 1/8" Pultruded Rigid Fiberglass
- 18 gauge (1.2mm) G90 Galvanized Steel
- 18 gauge (1.2mm) #316 Stainless Steel

Sizing [Custom sizes available]

FRP Covers

- Up to 10' in length & 15" deep
- Standard 1" vertical lip

Steel Covers

- Call for maximum capabilities



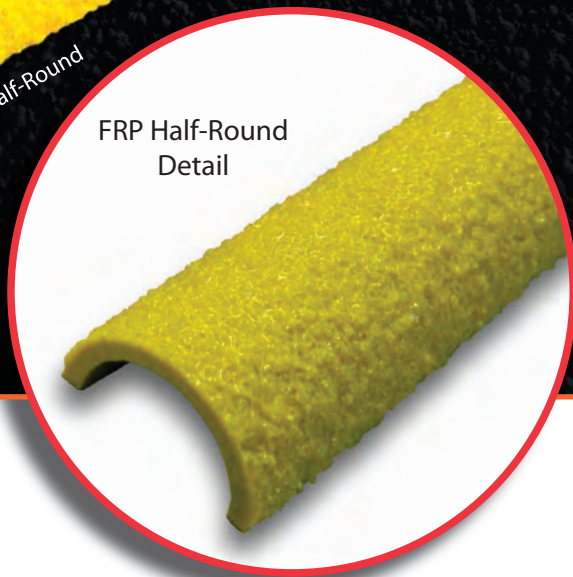
TRI-CHEM CORPORATION

800.456.6255 | tri-chem.com | info@tri-chem.com

Anti-Slip Hi-Traction®
**LADDER RUNG
COVERS**



TRI-CHEM



**Anti-Slip Ladder Rung Covers
Prevent Costly Slips-and-Falls!**

Hi-Traction® Anti-Slip Ladder Rung Covers are corrosion and impact resistant, providing years of slip prevention in a variety of environments - from offshore drilling platforms to residential applications.

Anti-Slip Hi-Traction® LADDER RUNG COVERS

Hi-Traction® Ladder Rung Covers

Deliver firm footed traction from top to bottom.

Ladder Rung Covers

Suitable for use indoors and out, in all types of weather and harsh conditions, our pre-fabricated Covers are resistant to impact, chemicals, and corrosives.



Base Material Options For Your Application

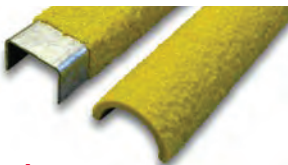
Choose from one of the following base materials of construction.

- 1/8" (3mm) Pultruded FRP Fiberglass
- 18ga (1.2mm) Stainless Steel
- 18ga (1.2mm) G90 Galvanized Steel
- Customer Supplied Materials

Base Material Shapes

Anti-Slip Ladder Rung Covers are available in two different material shapes to address your application:

- Channel
- Half-Round

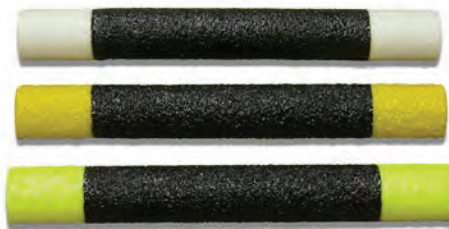


Choose Your Grade

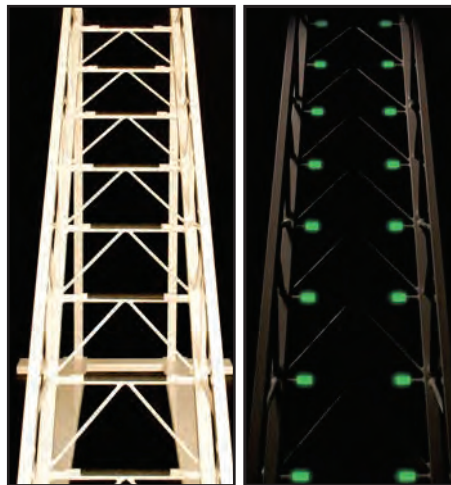
We offer 5 different grades of grit, depending on your application. Fine grade (Commercial) is the standard choice for most ladder applications.

Standard Dimensions, Sizes, and Colors

- Standard diameters range from 3/4" to 2"
- Custom Lengths available.
- Order in a range of standard safety colors, two-tone configurations, custom colors and photoluminescent "glow-in-the-dark" options.



Photoluminescent "Glow-in-the-Dark" colors available



Daytime and Nighttime

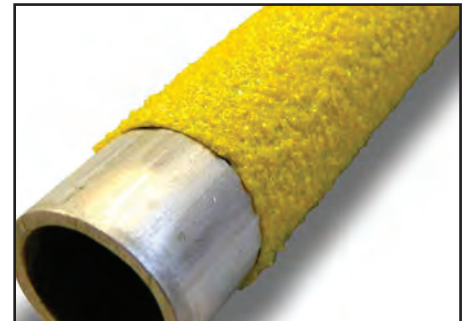
Retrofit design for easy installation

- Sikaflex 252 adhesive
- Tack welding
- Mechanical fasteners



Direct Gritting To Your Ladder Rungs

Direct rung gritting is a cost effective option, particularly at the OEM level, when retrofit Covers are not desirable. If you have finished rungs but do not want to adhere or screw a Cover over them, rungs or assemblies can be shipped directly to where the Anti-Slip surface is applied.



Example of Direct Gritting of customer supplied rung

Base Material		Inches	Millimeters
Pultruded FRP Round and Channel	Lengths	Up to 48"	Up to 1,200mm
	Diameters	3/4 up to 2"	19 up to 50mm
Metal Channel	Lengths	Up to 48"	Up to 1,200mm
	Diameters	3/4 up to 2"	19 up to 50mm
Metal Round	Lengths	Up to 20"	Up to 500mm
	Diameters	Call for availability	



TRI-CHEM CORPORATION

800.456.6255 | tri-chem.com | info@tri-chem.com

Anti-Slip TAPES

Cost Effective Slip Prevention



TRI-CHEM



Quickly Reduce Slips and Falls in Non-Harsh Environments.

Tri-Chem offers a complete line of Anti-Slip Tape in a variety of grits and color combinations. Tapes provide a cost effective, immediate solution, for slip and fall issues in low traffic, non-harsh environments.

www.tri-chem.com

Step Covers | Walkway Covers | Ladder Rung Covers | Pipe & Cable Covers | Roll-Traction® | Anti-Slip Mats | Anti-Slip Tapes

Anti-Slip TAPES

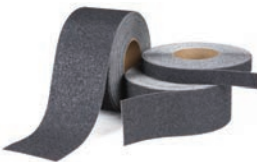
Cost Effective Slip Prevention

Anti-Slip Tapes

Quickly and economically reduce slips-and-falls.



Safety Track® 3100
Commercial Duty



Safety Track® 3200
Industrial Duty



Safety Track® 3700
Conformable Foil Backed



Safety Track® 3400
Glo Brite®



Safety Track® 3300
Commercial Colors

Application	Sizes Available	Note	Colors
<ul style="list-style-type: none"> For general purpose applications, indoor and outdoor. Durable, consistent non-slip surface, exceeds OSHA Standards. Silicon carbide grit ensures longevity. Aggressive, durable adhesive system. 	<ul style="list-style-type: none"> 2" x 60' Roll 4" x 60' Roll 6" x 60' Roll 6" x 24" Tread (10 pcs. per case) 6" x 24" Tread (50 pcs. per case) 	Other colors, sizes and shapes available upon request.	<ul style="list-style-type: none"> Black
<ul style="list-style-type: none"> Premium grade, coarse grit for industrial anti-slip needs. Stands up to oil, diesel fuel, mud, extreme OEM environments. Silicon carbide grit ensures a consistent, long-lasting "high slip resistance". Designed adhesive system to meet the strict application requirements. 	<ul style="list-style-type: none"> 2" x 60' Roll 4" x 60' Roll 6" x 60' Roll 6" x 24" Tread (50 pcs. per case) 	Other colors, sizes and shapes available upon request.	<ul style="list-style-type: none"> Black
<ul style="list-style-type: none"> Foil backed non-slip tape conforms to most any irregular surface. Excellent stability in high to low temperature range. Provides high traction surfaces for indoor and outdoor applications. Good for ladder rungs, radius corners, diamond plate, other raised surfaces. 	<ul style="list-style-type: none"> 2" x 60' Roll (6 rolls per case) 6" x 24" Tread (50 pcs. per case) 	Other colors, sizes and shapes available upon request.	<ul style="list-style-type: none"> Black
<ul style="list-style-type: none"> Affordable choice for emergency egress anti-slip protection. Glow-in-the-dark solution for marking stairs and corridors. Photoluminescent tape will adhere to most clean, dry, oil-free surfaces. Glo Brite® #3450 meets rigid ASTM and NYC (MEA # 235-05-M) standards 	<ul style="list-style-type: none"> 2" x 60' Roll 4" x 60' Roll 6" x 60' Roll 6" x 24" Tread (10 pcs. per case) 6" x 24" Tread (50 pcs. per case) 	Other colors, sizes and shapes available upon request.	<ul style="list-style-type: none"> Photoluminescent #3420 Photoluminescent NYC ASTM, #3450
<ul style="list-style-type: none"> Visual warning to mark potential slip and fall hazards. Available in a range of Safety and Commercial Colors. Available in Safety Messaging, e.g. "Watch Your Step". Ideal for commercial buildings and industrial applications. 	<ul style="list-style-type: none"> 2" x 60' Roll (6 rolls per case) 6" x 24" Tread (50 pcs. per case) 	Other colors, sizes and shapes available upon request.	<ul style="list-style-type: none"> Safety Red #3315 • Safety Orange #3320 • Safety Yellow #3335 Brick Red #3340 • Medium Brown #3345 • Concrete Gray #3350 Green #3355 • Speckled Yellow #3358 • Yellow/Black Stripes #3360 Yellow/Black, "Watch Your Step," #3360 (tread only) Yellow/Black, "Caution," #3360 (tread only) Snow White #3310 • Dark Blue #3325 Light Blue #3330 • Red/White Stripes #3365 Granite #3370 • Mop Friendly, Black #3375



Tapes can be ordered in a wide range of sizes, colors, and shapes. Please call for details on your particular application.



Contact Tri-Chem for more information or a free sample today.

Tri-Chem
800-456-6255
info@tri-chem.com
www.tri-chem.com

Anti-Slip Hi-Traction®
ROLL-TRACTION®
Anti-Slip Walkway Cover



TRI-CHEM



Cost Effective and Portable Solution for Slips-and-Falls over large areas.

Tri-Chem Roll-Traction® Walkway Covers are a durable, pliable, and portable solution for eliminating slips and falls on wet, oily, and slippery surfaces.

Anti-Slip Hi-Traction® ROLL-TRACTION® Anti-Slip Walkway Cover

Tri-Chem Roll-Traction®
Heavy-duty movable Walkway Cover
for large areas.



Tri-Chem Roll-Traction® Walkway Covers offer excellent protection against slips and falls.

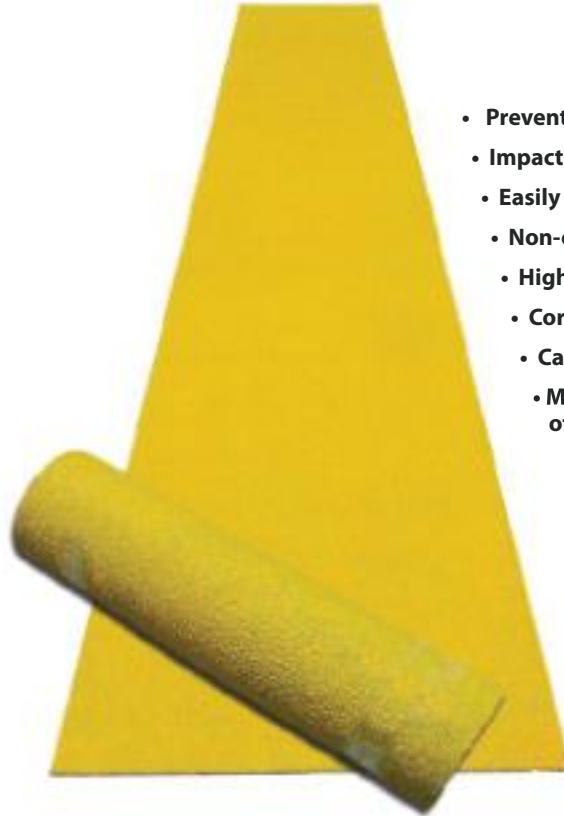
Water, oils, and chemicals can create dangerous working surfaces when introduced on walkways, decks, and floors. By using Tri-Chem Roll-Traction® Anti-Slip Walkway Covers, a secure, anti-slip area can quickly and conveniently be created any where. This heavy duty, flexible polymeric geomembrane can be put down temporarily for easy removal and cleaning. Roll-Traction® can also be secured by mechanical fasteners or adhesives for a more permanent installation.

Grit and thickness to suit your application

Roll-Traction®		Average Thickness Inches	Average Thickness Millimeters
Grade	Coarse	0.101"	2.6mm
	Fine	0.095"	2.4mm
	Extra Fine	0.087"	2.2mm
	Super Fine	0.080"	2.0mm
Average Weight: 0.8lb / Sq. foot (0.36kg. / Sq. meter) with Coarse grade grit			

Maximum Available Sizes

Roll-Traction®	
Width	Length
29" Width	40' Max Length
(.75m) 736.6mm Width	12m Max Length
40" Width	30' Max Length
(1m) 1016mm Width	9m Max Length
58" Width	20' Max Length
(1.5m) 1473.2mm Width	6m Max Length
*Custom widths are available in combined lengths over 126' or 38.4m	
**Super Coarse/Xtreme and Extra Coarse are not available on Roll-Traction®	



- Prevents slips and falls
- Impact & puncture resistant
- Easily installed
- Non-conductive
- High strength
- Corrosion resistant
- Can be rolled for storage
- Meets OSHA & ADA Coefficient of Friction Guidelines

Superior Coefficient of Friction

Tri-Chem Technology's Hi-Traction® surface nearly doubles both OSHA 0.5 and ADA 0.6 guidelines for Coefficient of Friction values¹, even in wet or oily conditions.

¹Confirmed in independent lab testing using the Mark II Model of the Brungraber slip tester.

Grit Sizes and Color

Choose from four grades of grit (not available in Super Coarse/Xtreme or Extra Coarse/Offshore) and standard colors only. Due to the length of the rolls, two-tone color configurations are only available at the ends, across the width of the Cover. Glow Colors can be done in two-tone configurations and are only on the ends of the Roll-Traction®.



TRI-CHEM CORPORATION

800.456.6255 | tri-chem.com | info@tri-chem.com

COLOR PALLET

For Hi-Traction® and HiGlo-Traction®
Product Lines



TRI-CHEM



COLOR GUIDE

Tri-Chem offers our complete line of Hi-Traction® and HiGlo-Traction® Anti-Slip Covers in solid colors, two tone color configurations, as well as photoluminescent Glow-in-the-Dark.

COLOR PALLET

For Hi-Traction® and HiGlo-Traction®
Product Lines

Tri-Chem Anti-Slip Products are available in a variety of colors to meet the needs of safety-minded customers. Choose from a range of solid colors or combine colors for a two-tone configuration, accentuating the leading edge or creating boundaries for added visual safety awareness.

Color Pallet

In addition to standard and safety colors, Tri-Chem also offers a line of premium colors. Based upon popular trends and subtle color hues, the premium line fits well with the aesthetic requirements for Anti-Slip safety at schools, commercial buildings, hotels, restaurants, and residential homes.

Photoluminescent "Glow-in-the-Dark" Pigment

HiGlo-Traction® Covers offer Anti-Slip protection with the added benefit of Photoluminescent "Glow-in-the-Dark." In addition to standard Photoluminescent, which is white when non-glowing, Tri-Chem offers Glo-Safety Yellow, Glo-Safety Lime, Glo-Green, Glo-Pink, and Glo-Orange. These Photoluminescent Safety Products use an embedded inorganic pigment that creates a glow when active. The pigment is non-toxic, non-radioactive, and can be recharged repeatedly throughout the life of the product.

Two-Tone Configurations:

Tri-Chem colors can be combined to create a two-tone configuration. Contrasting color on the nosing and vertical lip of a Step Cover, calls attention to the leading edge of a stair. Contrasting color on the perimeter of a Walkway Cover designates a change in surface texture and signifies a safe walk zone. Two-tone can also be configured on Ladder Rung Covers and is standard on all Pipe and Cable Covers.

An economical alternative to full 100% Photoluminescent Covers is a combination with a solid color. Not only do you have a two-tone configuration in the light, but also the benefit of Glow-in-the-Dark when the light source is removed.

* Due to the combination of aggregates used to achieve the "speckled effect," the following colors can only be combined with one another:

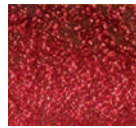
Speckle Photo • Brisbane Brick Red • Erie Blue
• PM Salmon • Garfield Gray • Grand River Gray
• Ipswich Olive • EKriz Brown • Newbury Sky
• Mentor Sand • Hudson Hunter Green

The samples on this sheet serve only as a visual guide for initial selection of color. Actual finished product color may vary slightly from the printed images based on grit size (coarseness) as well as the base material of construction.

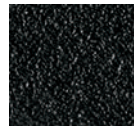
For an accurate depiction, please request a product sample.

Tri-Chem Hi-Traction® & HiGlo-Traction® Covers are available in various color options to meet the needs of safety-minded customers.

Standard Color Options



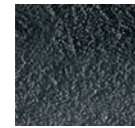
Red



Black



Brown



Gray



Safety Yellow



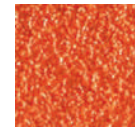
Green



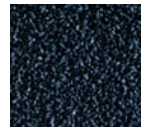
Beige



White/Non-Glowing



Orange



Blue



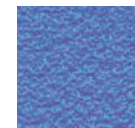
Fluorescent Green



Fluorescent Orange



Fluorescent Pink



PPE Blue

Premium/SGT2100 Colors



Bainbridge Blue



Speckle Photo



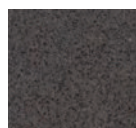
Brisbane Brick Red



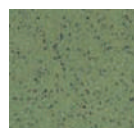
Erie Blue



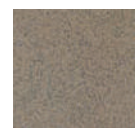
PM Salmon



Garfield Gray



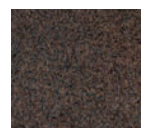
Ipswich Olive



EKriz Brown



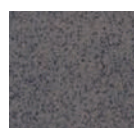
Geauga Green



Chagrin Chocolate



Newbury Sky



Grand River Gray



Mentor Sand



Hudson Hunter Green

HiGlo-Color Options



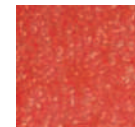
Glo-White



Glo-Orange



Glo-Safety Yellow



Glo-Pink



Glo-Lime



Glo-Green

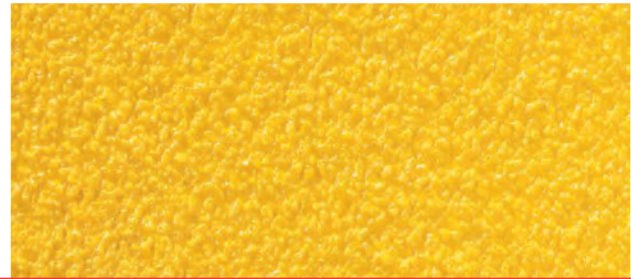
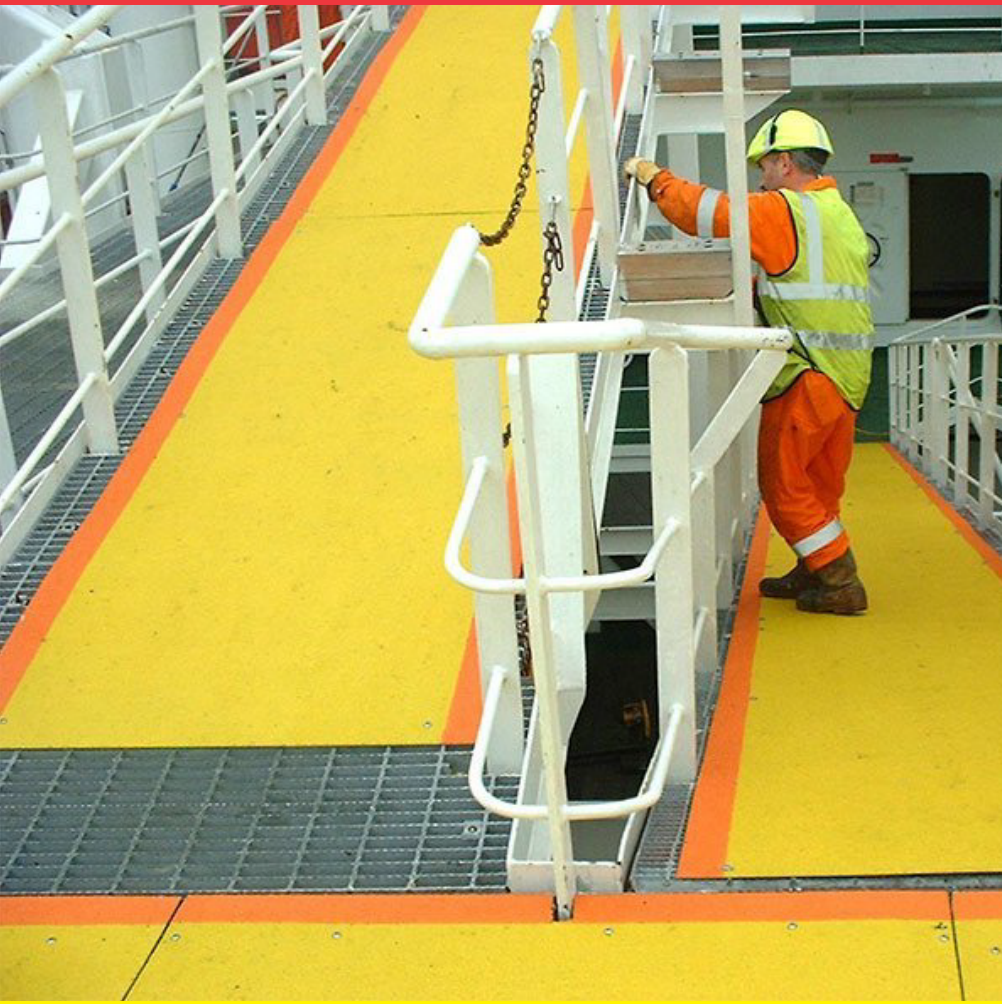
Custom Color Matching:

In addition to stock colors, Tri-Chem has the ability to provide custom color matching. Please contact Tri-Chem for more information on this option.



TRI-CHEM CORPORATION

800.456.6255 | tri-chem.com | info@tri-chem.com



Tri-Chem Corporation | 800.456.6255 | tri-chem.com