

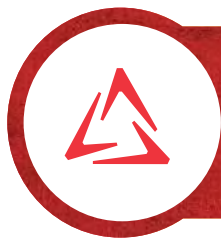


TRI-CHEM



**REPAIR, MAINTAIN &
PROTECT YOUR FACILITY**



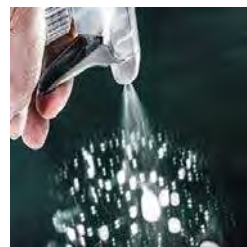


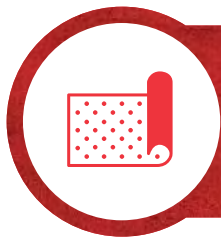
TRI-CHEM

WHO WE ARE

At Tri-Chem, we don't just sell products—we are experts at guiding our customers to the most cost- and time-effective solutions for meeting specific application requirements. We have the science, experience, and industry expertise to develop some of the best field- and time-tested coatings and sealers sealers, degreasers, tooling, and safety products on the market. The only products we offer are the ones that perform. Period. Tri-Chem is an organization with a laser focus on providing complete solutions and top-notch customer service. Why? Because we are experts at Repairing, Maintaining and Protecting your Facility. It's as simple as that.

- △ Absorbents and Containment
- △ Cleaners and Degreasers
- △ Coatings and Sealers
- △ Coolants and Lubricants
- △ Filters
- △ Gloves
- △ Green Products
- △ Mats
- △ Parking Lot Repair
- △ Patching
- △ Pipe Repair
- △ Roof Repair
- △ Safety Supplies and Equipment
- △ Specialty Coatings
- △ Tooling





ABSORBENTS & CONTAINMENT

WE ALL KNOW ACCIDENTS HAPPEN!

The most important question is—**Are you prepared?**

You need a **Spill Response Plan** ready to go at moment's notice.

Creating your plan depends on the size of your facility, your industry, and the type of chemicals or hazardous fluids used and stored. These are key factors when choosing which absorbents to have on-hand when accidents happen.

Workplace safety and environmental contamination protection are no joke. We can help you prevent costly leaks, meet pollution mandate requirements, and contain dangerous spills for manageable, easy cleanup—all with eco-friendly solutions.

INVENTORY CHECKLIST:

- △ Loose Sorbents
- △ Absorbent Rolls, Pads & Matting
- △ Socks, Booms, & Pillows
- △ Drain & Storm Water Protection
- △ Spill Containment
- △ Rags & Wiping Cloths
- △ Spill Kits
- △ Plugging & Patching
- △ Storage Containers





SOCKS, BOOMS, & PILLOWS



SPILL KITS



PLUGGING & PATCHING



STORAGE CONTAINERS



ROLLS, PADS & MATTING



RAGS & WIPING CLOTHS



LOOSE SORBENTS



SPILL CONTAINMENT



DRAIN/STORM PROTECTION



ANTI-FATIGUE MATTING

REDUCE STRAINS, PAINS, & WORKMANS' COMP CLAIMS

How often do you replace workstation mats?

If it's more than once in 5 years, you're throwing away your money.

From your front entrance to shipping/receiving and everywhere in between, our long-lasting, reliable matting line has you covered. Our matting solutions will reduce workplace accidents, promote employee wellness, and protect the floors throughout your facility.

Our mats are designed to withstand everyday wear-and-tear to provide your facility with years of protection. The majority of our mats come with a 100% customer satisfaction guarantee, and all come with a warranty.

Types of Anti-Fatigue Matting we offer:

- △ General use
- △ Custom Sizes
- △ Multiple Tile (several varieties)
- △ WeldSafe
- △ ESD
- △ And more

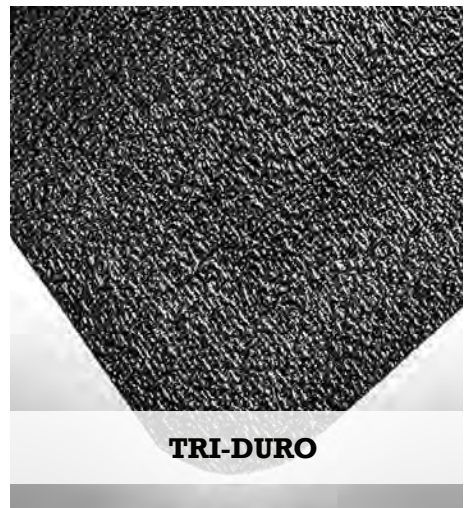




TRI-MAT I



TRI-MAT II



TRI-DURO



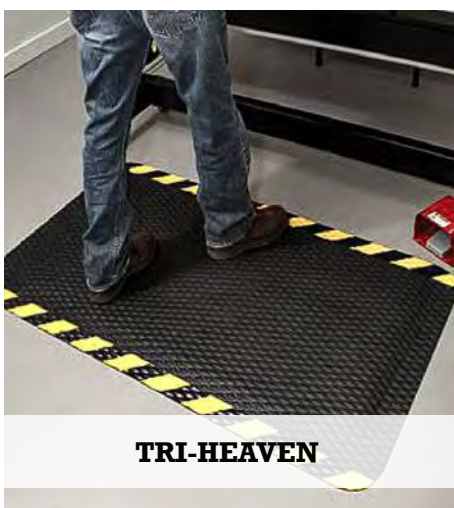
TRI-DURO KNEELING PAD



TRI-CUSHION STATION



TRI-STEP



TRI-HEAVEN



**TRI-HEAVEN MODULAR
TRAFFIC TILE**



**TRI-HEAVEN MODULAR
COMFORT FLOW TILE**



CLEANERS & DEGREASERS

VERSATILE. POWERFUL. CONCENTRATED.

The Tri-Chem Advantage

We offer complete cleaning and degreasing solutions for industrial and commercial use, from consultative services to a full range of powerful, highly concentrated products, including eco-friendly maintenance products like our own Green Seal Certified cleaner.

With so many products on the market, it can be difficult to choose the right product for the job. Our full-time chemist has created simple solutions to clean up the confusion surrounding cleaners and degreasers. We can even modify existing cleaners/degreasers or create new proprietary solutions for your specific application.

Keeping your facility safe and clean isn't a one-man job. It's not even a one-company job. With Tri-Chem, you have a complete team of educated consultants and proven science backing you up to ensure your facility meets industry safety standards and environmental protection mandates.



We've been in the business long enough to know what works and what doesn't. We've strategically designed an entire line of cleaners and degreasers for a wide variety of applications, including, but not limited to:

- △ Oil-soaked floors
- △ Caked-on grease
- △ Clogged drains
- △ Adhesive removal
- △ Limescale buildup
- △ Cleaning electrical contacts, circuits, and motors
- △ Etching compounds



EXTREME CLEAN

Extreme Clean is an all-purpose, biodegradable emulsifier that rapidly penetrates grease, oil, grime, and dirt on any machinery, coolant holding tanks, conveyors, and more.



TRI-CLEAN SUPER

Tri-Clean Super is a water-soluble cleaner/degreaser that can be used in parts washers, automatic floor scrubbers, power washers, machines, and more.



TRI-CLEAN EXTREME

Tri-Clean Extreme is an all-purpose, biodegradable emulsifier that is butyl-based. It rapidly penetrates grease, oil, grime, and dirt, and can be used on a variety of surfaces.



TRI-CLEAN GREEN

Tri-Clean Green is an all-purpose cleaner/degreaser that does not use hazardous chemicals. It can be formulated as concentrate or RTU and can be used in anything from floor scrubbers to spray bottles.



ORANGE SOLVE

Orange Solve is used for general-purpose cleaning, adhesive removal, deodorizing, tar removal, and dissolving grease and oily films from drain lines and metal surfaces.



FREE FLOW

Free Flow is a blend of cultured bacteria, enzymes, detergents, and deodorants that will liquefy organic waste, paper, grease, hair, and fat to free drains, pipes, and traps.



COATINGS & SEALERS

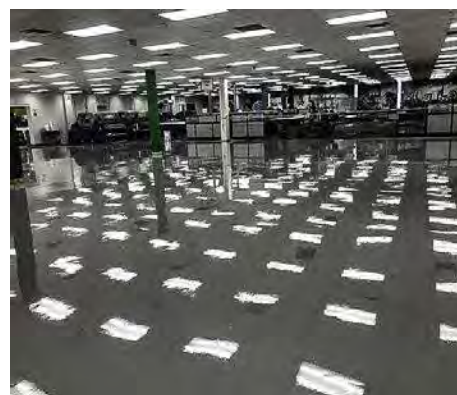
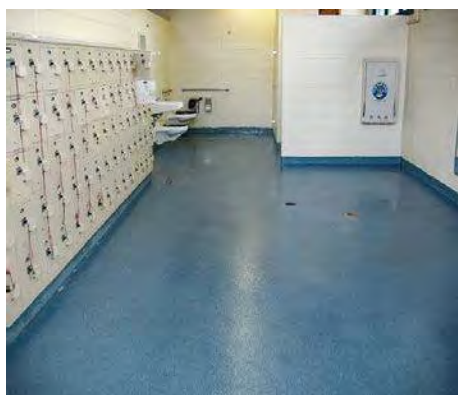
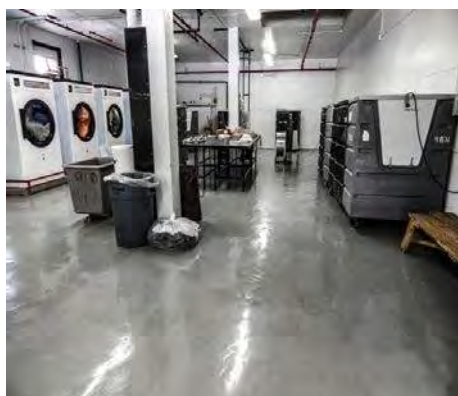
THE HOLY GRAIL OF COATINGS & SEALERS

Tri-Chem's lineup of industrial-strength coatings and sealers is the Holy Grail in resilience, durability, and visual appeal. You won't find a more user-friendly and cost-effective group of products in the facility maintenance industry, or a more educated team of consultants to help you solve your industrial maintenance issues.

INDUSTRIAL SOLUTIONS FOR INDUSTRIAL SETTINGS

Our coatings and sealers contain only the highest quality raw materials to give you a high-performing, long-lasting solution ideal for facilities with lots of traffic, harsh conditions, and chemical exposure.

Our product lineup features multiple environmentally friendly epoxies, top coats, primers, and sealers that are VOC-complaint, have virtually no odor, and meet USDA/FDA guidelines for installation in federally inspected facilities.

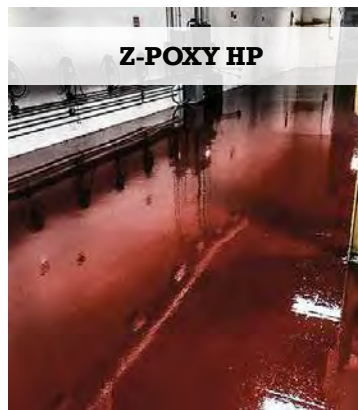




Z-POXY

Z-Poxy

is a super-strength coating and sealer for high-traffic floors. It is 100% solids, abrasion- and chemical-resistant, and has no VOCs.



Z-POXY HP

Z-Poxy HP

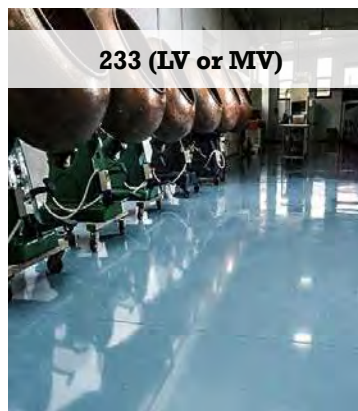
is a high-build, 100% solids, novolac epoxy coating that provides resistance to harsh chemicals and can be used as a topcoat over epoxy and polyurethane.



144 (G or LL)

144 (G or LL)

is a zero-VOC, aliphatic, polyaspartic polyurethane. 144 comes in gloss and low luster, and produces an exceptionally hard, non-yellowing finish.



233 (LV or MV)

233 (LV or MV)

is a 100% solids cyclo-aliphatic epoxy coating used where a water-clear or solid color coating is required. 233 comes in low and medium viscosity.



377 (TR, SL, or D)

377 (TR, SL, or D)

is ideal for use in food and beverage processing plants. It is a cementitious urethane flooring system applied three different ways.



DAMP SURFACE COATING

Damp Surface Coating

is suitable for use as a heavy-duty, industrial, protective, and marine surface coating. It can be used on humid or damp surfaces.

Z-POXY COLOR OPTIONS:



For more coating and sealer options, or detailed information on a specific product above, contact your Tri-Chem Sales Rep today!



COOLANTS & LUBRICANTS

MAINTAIN THE LIFESPAN OF YOUR TOOLS & MACHINERY

Heat produced during the machining process will seriously damage machines and tools if not dispersed properly.

Our team of facility and tooling maintenance chemists and experts can help you find and apply the right coolants and lubricants to maintain and extend the lifespan of your tools and machinery.

REDUCE DOWNTIME. IMPROVE PERFORMANCE. SAVE MONEY.

The right coolants and lubricants for the tools and machines you use are critical to properly regulate system temperatures and prevent tools from exceeding critical damage range—extending the life of your tools and machinery and increasing their overall performance.



Types of Coolants and Lubricants we offer:

- △ Flood or Mist Fluids
- △ Grinding Fluids
- △ Metal Cutting
- △ Metal Forming
- △ Mold Releases & Release Agents
- △ Quenching Oils & Heat Treatment
- △ Straight Cutting Oils
- △ Water-emulsifiable Oils
- △ Aluminum-specific
- △ Grease
- △ Anti-freeze
- △ Corrosion Protection
- △ Synthetic & Semi-Synthetic
- △ Petroleum- or Oil-based

COOLANTS

KLEAR KUT



Klear Kut

is a heavy-duty, semi-synthetic cutting coolant for machining of all steels. It gives good performance with copper alloys.

MIST EASE



Mist Ease

is recommended for use as a microdosing lubricant for machining ferrous and non-ferrous components.

TRI-COOL



Tri-Cool

is a soluble oil coolant for machining of all steels, and gives good performance with most copper alloys.

THE CUTTER



The Cutter

lubricates and cools machining operations, allowing for longer tool life and more precise machining.

Free survey upon request for proper product selection. For more details contact your Tri-Chem sales rep today!

LUBRICANTS

WRENCH EASE



Wrench Ease

penetrates to loosen nuts and bolts, and dissolves rust instantly. It is used anywhere a light oil lubricant is needed.

DOUBLE LUBE



Double Lube

penetrates into chains, cables, and wire rope to deposit a wear-resistant coating.

GEAR LUBE



Gear Lube

is a tacky spray lubricant that protects all moving surfaces from metal-to-metal contact and forms a protective coating.

SPEED WHITE



Speed White

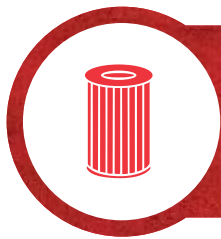
penetrates like an oil, then cures to a thick, water-resistant grease. It is ideal for slides, bearings, small gears, tools, chains, etc.

SEES PROOF



Sees Proof

is an anti-seize for sealing on high-heat, high-pressure gaskets, hoses, hydraulic fitting steel, brass, aluminum, or rubber.



FILTERS

THE RIGHT FILTER MATTERS

Filters are a critical element to a safe and efficient workplace. Part of following federal safety standards and guidelines for healthy indoor air quality (IAQ) means implementing filters throughout your facility. Using the appropriate filters will also reduce downtime and keep your system running at peak performance.

Don't let dirty filters waste your time and budget!

Our team of experienced consultants can help you identify the proper filters and provide maintenance guidelines based on your industry, machines, environments, and applications.

THE RIGHT FILTERS WILL:

- △ Keep your HVAC system running properly
- △ Decrease operating, maintenance, and repair costs
- △ Improve air quality
- △ Increase equipment efficiency
- △ Prolong system lifespan





BAG FILTERS

Bag Filters

include complete line of replacement and custom bags to fit all manufacture bag housings.



METAL MESH

Metal Mesh

are heavy-duty air/grease filters that catch 98% of particles and dust. They have a shorter lead time and are less expensive than fiberglass filters.



GEO PLEATS

Geo Pleats

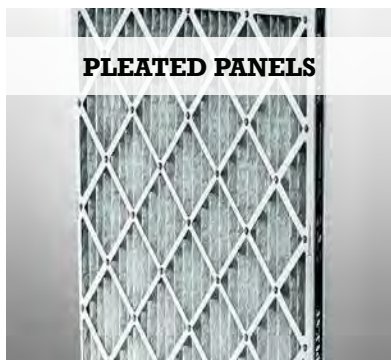
provide a high level of filtration in a wide variety of applications. Robust media resists tears, punctures, moisture, and microbial growth.



HEPA FILTERS

HEPA Filters

are extremely rugged compact construction. They offer 366 sq. ft. of effective filter surface area in a durable frame.



PLEATED PANELS

Pleated Panels

offer significantly higher efficiencies, longer life, and better dust-holding capacities than conventional flat panel filters.



RIGID CELLS

Rigid Cells

are commonly used in both side-access and built-up filter banks. Rigid compact design is not affected by variation in air flow.



POLYESTER ROLLS

Polyester Rolls

provide extra protection for HVAC coils and equipment. They come in a variety of widths, thicknesses, lengths, media grades, etc.

OTHER FILTER TYPES:

- Electrostatic
- Residential Products & Media
- Foam Media, Roll & Pads
- Paint & Finishing Products
- Automatic Roll
- Pocket
- Fiberglass
- Panels and Links
- Cube
- ASHRAE Cartridge
- FP
- High Volume HEPA
- Mini-Pleat
- Gas Phase
- Bio-Safety
- Baffle Grease
- Cleanrooms
- Holding Frames & Chips
- Inner Seal Housing
- Liquid Vessels & Systems
- Power
- Washable Metal
- Liquid Bags



GLOVES



PERFORMANCE. FIT. COMFORT.

Without the right gloves for different jobs and tasks, employees run the risk of injury and other hazards. Your hands are the most valuable and widely used tool in any workplace—why wouldn't you protect them first?

PROTECTION FOR EVERY TASK

Regardless of industry or task, we can provide your entire facility with OSHA-compliant gloves, from heavy-duty welding gloves to rubber-dipped industrial gloves and cowhide driver gloves. Our wide selection will help you enable workers to focus on a wide variety of responsibilities, including:

- △ Handling hazardous chemicals
- △ Moving high-temp parts
- △ Protection in cold environments
- △ Cleaning restrooms
- △ Construction and machinery operations
- △ Welding applications



We can help you find a true balance of comfort, protection, and flexibility to keep employees safe and meet OSHA standards.

HEAT, COLD, & CUT PROTECTION — LEATHER



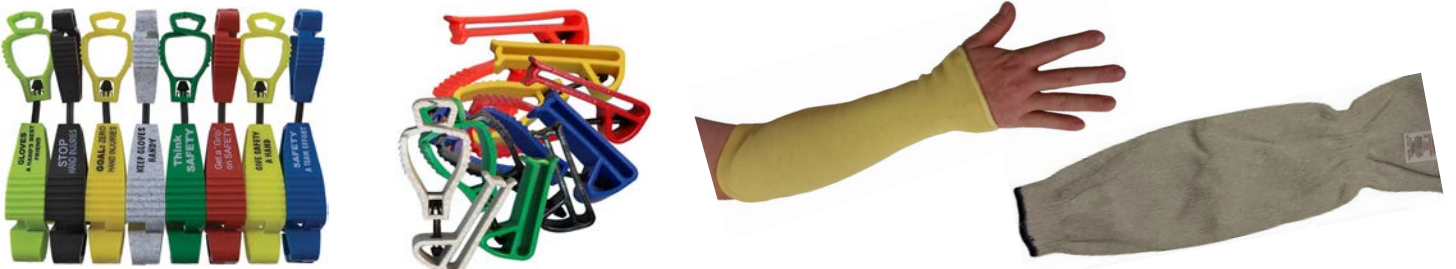
COATED — COTTON & STRING



MULTI-TASK — DISPOSABLE



ACCESSORIES





PARKING LOT REPAIR

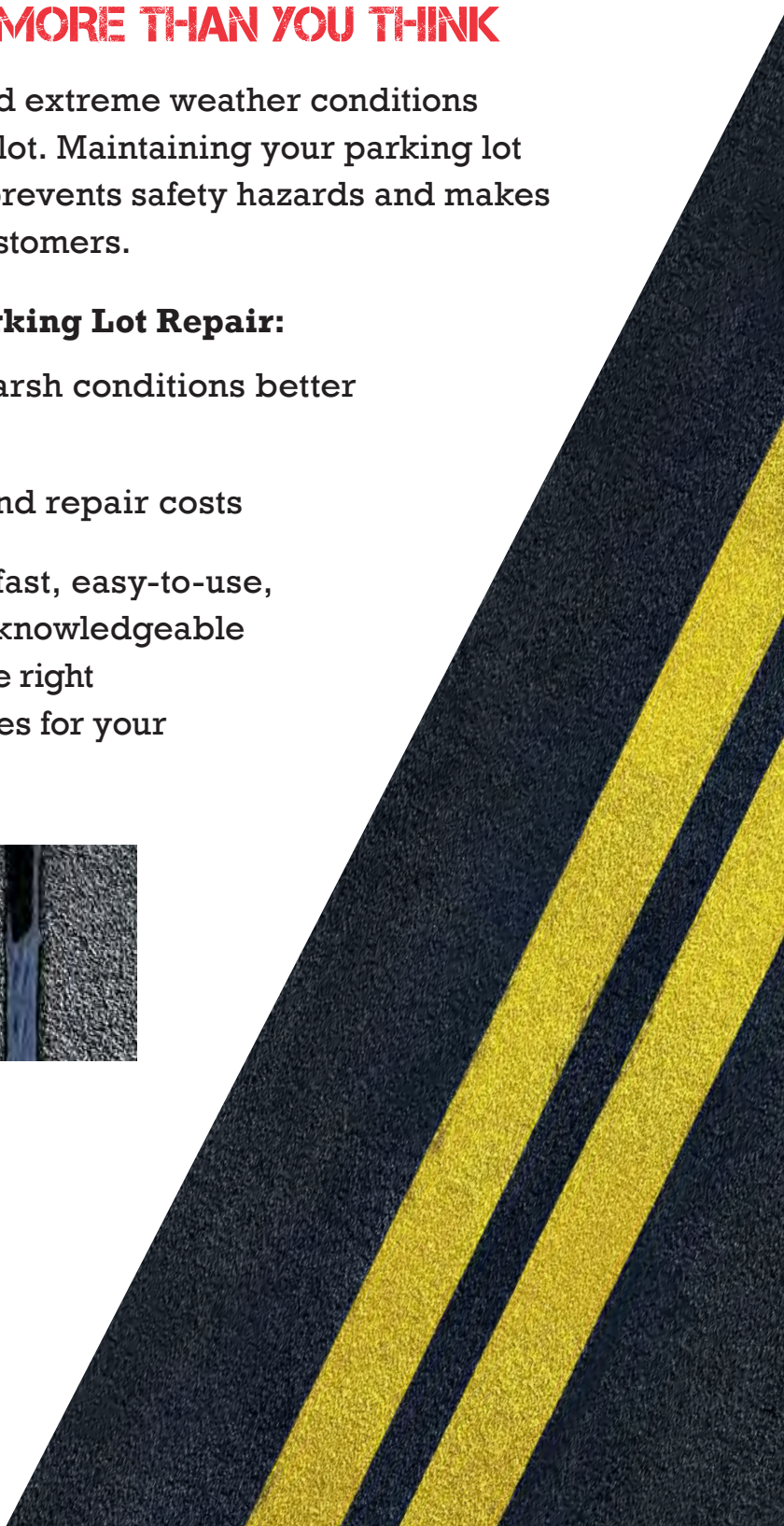
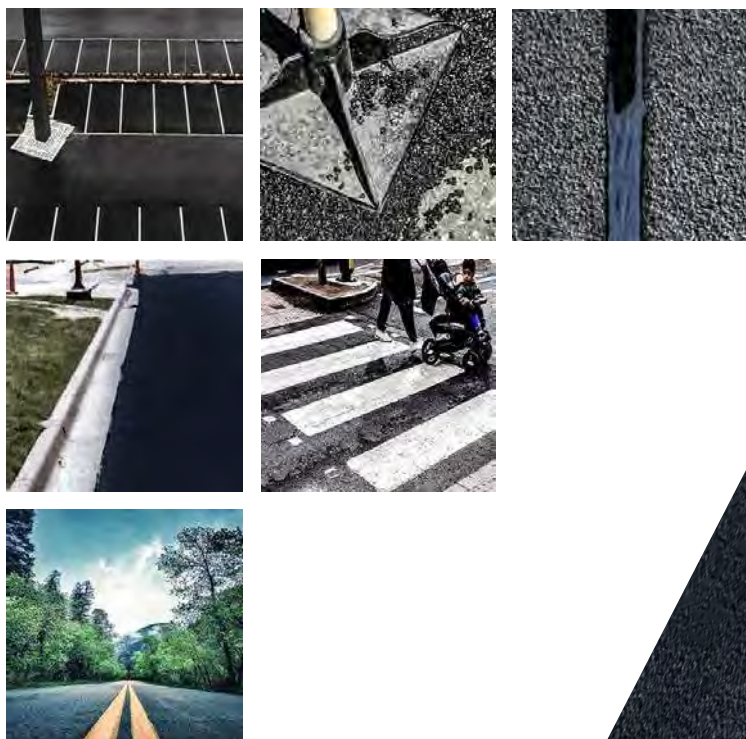
YOUR PARKING LOT SAYS MORE THAN YOU THINK

Seasonal temperature changes and extreme weather conditions can wreak havoc on your parking lot. Maintaining your parking lot regularly with the right products prevents safety hazards and makes a good impression on potential customers.

Benefits of Industrial-Grade Parking Lot Repair:

- △ Withstands heavy traffic and harsh conditions better
- △ Easy application saves time
- △ Reduces yearly maintenance and repair costs

You need a repair solution that is fast, easy-to-use, and effective. Tri-Chem's team of knowledgeable consultants can provide you with the right products and maintenance strategies for your specific environment.





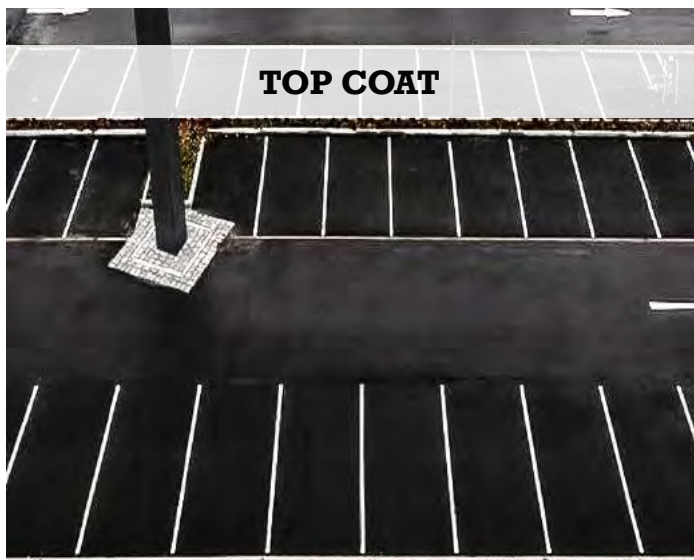
CRACK GONE SUPER

Crack Gone Super seals cracks where structures meet sidewalks and/or driveways. It produces a tough, flexible membrane that reduces water intrusion.



REPAIR

Repair is an all-weather patching compound used to keep shipping and loading areas, parking lots, drives, and walks in safe repair all year round.



TOP COAT

Top Coat is an asphalt emulsion material specifically developed to seal hairline cracks and protect and give new life to asphalt pavements.



ROAD LINE FAST SET

Road Line Fast Set is a conventional dry (non-heat) marking paint for concrete, brick, cured asphalt-surfaced roads, driveways, airfields, etc. It may be made reflective.



PATCHING

GOT CONCRETE? GET PATCH.

If you run harsh or industrial operations, you will need to repair your facility. Even the most durable substances, like concrete, eventually fall victim to the wear-and-tear of industrial business conditions.

IS IT WORTH THE RISK?

Holes, cracks, and damaged expansion joints can quickly and easily become bigger problems. If not addressed, they can create employee safety hazards, Workmans' Comp claims, compromise structural integrity, and increase the risk for equipment and product damage.

SOLUTIONS FOR ALL SITUATIONS

Tri-Chem has developed its own line of proprietary patching systems, formulated with only the highest quality raw materials. Designed to withstand the harshest environments, these solutions are pre-measured and easy-to-use so anyone in your facility can fix a problem quickly and effortlessly.

Tri-Chem's patching solutions can be applied anywhere, including:

- △ Vertical surfaces
- △ Tanks
- △ Horizontal surfaces
- △ Coal chutes
- △ For structural integrity
- △ To anchor heavy machinery
- △ And more

Contact our experienced team of patching experts to learn how the right products can reduce repairs and save you time and money.



EXTREME PATCH



Extreme Patch is a pigmented, heavy-duty, high-compression strength patch for damp plant floors.

Z-PATCH



Z-Patch is a pre-measured patch that repairs damaged floors, eliminates cracks and damaged expansion joints, and anchors machinery.

FLEXIBLE JOINT SEALER FAST SET



Flexible Joint Fast Set is a 100% solids polymer dual cartridge system designed to repair cracks and damaged expansion joints.

663 RAPID REPAIR PASTE



663 is a fast-track repair for chips, defects, and small voids in vertical and overhead concrete surfaces.

PERMA-FIL



Perma-Fil is a high-strength floor patch that withstands heavy traffic and bonds to concrete, steel, and wood.

PERMA-FIL DAMP PATCH



Perma-Fil Damp Patch is high-strength floor patch that withstands heavy traffic and cures on damp and wet concrete.

QUICK PATCH



Quick Patch is a fast-curing leveling compound used to fill large cracks in severely damaged concrete floors.

HEATCRETE 3100



Heatcrete is for repairing concrete on/around furnaces, cast houses, iron cupolas, hot metal spillage areas.

RECRETE



Recrete is a fast-setting mortar mix resurfacing and patching material for concrete, wood, and metal surfaces.

SPECIAL PATCH



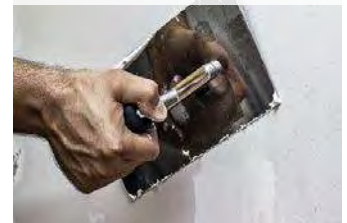
Special Patch is a 1-hour concrete mender for rebonding cracked concrete restoring structural integrity. Available in a cartridge.

THREE PATCH



Three Patch is a blend of resin, hardener, and aggregate for damp concrete floors from chemical spillage.

QUICK FREEZER SEAL



Quick Freezer Seal is recommended for industrial repairing of concrete holes, cracks, and thresholds.



PIPE REPAIR

GOT LEAKY OR THINNING PIPES?

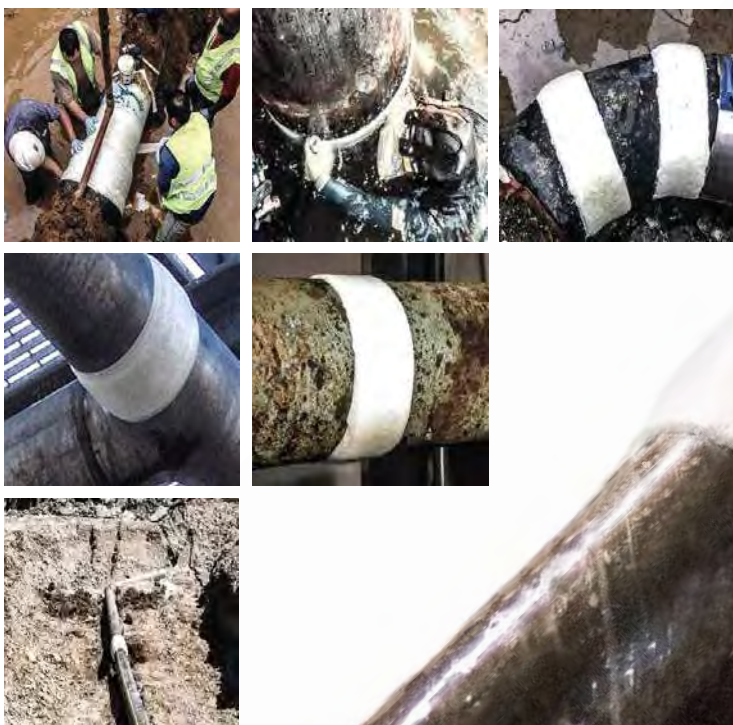
Whether you need to stop leaky pipes, reinforce pipe joints, or build up thinning, rusted, or deteriorating pipe walls, Stop-It is the ideal pipe repair kit.

Restore product and profit flow in minutes!

Stop-It is extremely easy and fast to apply and works on any metal or plastic pipe. Use it as a permanent or temporary fix to minimize downtime. Even if you need an immediate pipe replacement, Stop-It is your go-to production saver.

LIKE-NEW PIPES IN MINUTES

- △ Chemical resistant / corrosion-proof
- △ Can be formed to any shape
- △ Can be sanded and painted after fully cured
- △ Available in multiple sizes
- △ Safe to use on drinking water pipes



Talk to our pipe repair experts today for more information on extending the life of your pipes and best maintenance practices.

WORKS ON:

- Pressure to 400 PSI
- Temperatures to 500°F
- Pipes up to 18 in
- Any metal or plastic:
 - Steel
 - Copper
 - Aluminum
 - Galvanized
 - Black Iron
 - Stainless Steel
 - PVC
 - CPVC
 - Fiberglass
 - Polyethylene
 - Polypropylene
 - PVDF

USED BY:

- Petrochemical
- Industrial processing
- Pulp and paper
- HazMat response
- Military
- Marine
- Irrigation
- Power generation
- Facilities maintenance
- Water/wastewater
- Manufacturing
- Commercial fishing
- Food processing
- Pharmaceutical
- Automotive

USED FOR:

- Routine and emergency leak repair
- Hazardous material spill control
- Structural reinforcement
- Sealing joints
- Rebuilding thinning wall
- Corrosion proofing
- Abrasion protection
- Repairs in hard to reach areas
- Underwater repairs
- Electrical conduit repair





ROOF REPAIR

YOUR FACILITY'S FIRST LINE OF DEFENSE

Your roof is the first line of defense against Mother Nature and the most vulnerable and susceptible to damage and deterioration.

The number one cause of roof failure is poor maintenance—so taking care of your roof should be top priority. Proper care can prolong roof life by a decade or more.

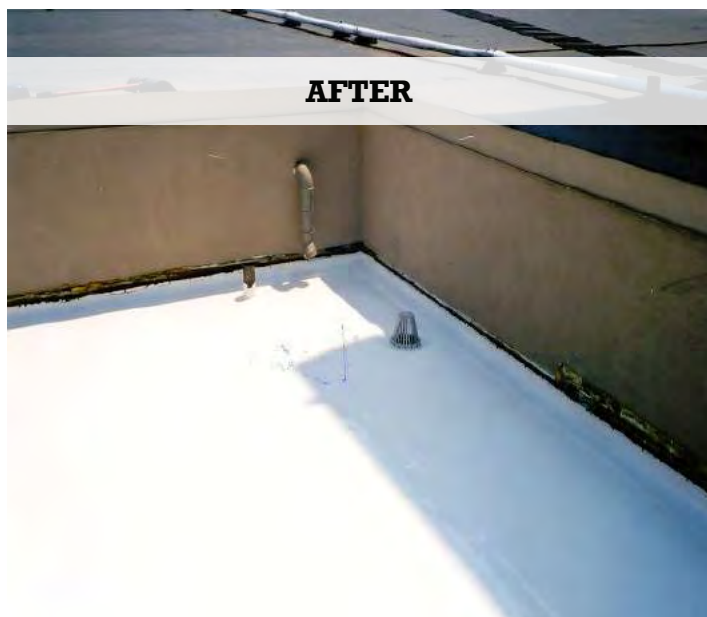
TRUE PROTECTION STARTS AT THE TOP

Different types of roofing systems prevent different issues, and we can help you choose the correct repair and maintenance products for your situation and environment.

With the right roof maintenance approach and products, you can:

- △ Reduce utility bills
- △ Increase HVAC efficiency
- △ Reinforce weak roof areas
- △ Reduce repair downtime
- △ Prevent water damage
- △ Stop emergency leaks in minutes

Don't have a maintenance schedule set up? Create one now—talk to our consultants today to develop a strategy and find products that work for your needs.





TRI-COVER I

Tri-Cover I is a tough, flexible, refined fiber fillers for patching around roof flashing, stacks, skylights, gutters, chimneys, copings, etc.



TRI-COVER II

Tri-Cover II is a rubber covering sealing all leaks with 12x the thickness of ordinary paint. Highly reflective.



GREY ELASTOMERIC PRIMER

Grey Elastomeric Primer is a general-purpose acrylic coating that insulates, protects, expands, and contracts.



RAPID PATCH

Rapid Patch is a temporary roof plug for leaks. Can be applied in pouring rain and moves through standing water.



ROOF PATCH & REPAIR

Roof Patch & Repair seals water leaks and fills cracks and voids. Will not sag, crack, or peel in heat or cold.



TRI-COVER WHITE LATEX ROOF COATING

Tri-Cover White Latex Roof Coating is based on a synthetic latex system that increases flexibility and improves adhesion and maintenance of a brilliant white color.



WHITE ELASTOMERIC ROOF CEMENT

White Elastomeric Roof Cement is a resilient, long-lasting, durable patch that resists mildew and weathering.



WHITE ELASTOMERIC ROOF COATING

White Elastomeric Roof Coating is a thick, rubber-like coating that expands and contracts with the roof. Superior reflectivity lowers temperatures and saves energy.



ACROGUARD

Acroguard is an excellent elongation, tensile strength, UV and weather resistance with low temperature flexibility. Adheres to EDPM roofing.



SAFETY SUPPLIES & EQUIPMENT

TOP 3 BENEFITS OF A SAFE WORKPLACE

Legal Requirements

Organizations that don't meet today's safety standards put themselves at risk for hefty fines and possible litigation. Providing employees with the right equipment complies with current safety laws and saves your company money.

Happier, More Productive Employees

When workers know they are protected by relevant laws, they are more positive and productive. Adhering to these laws reduces downtime from occupational injuries, job-related illness, and fear of environment.

Client Appeal

Meeting safety requirements improves your reputation and enhances your organization's value. Many clients are required to work with socially conscious businesses that care about their employees' welfare and safety.

Tri-Chem's experienced staff takes workplace safety seriously and can help you meet legal requirements with our extensive line of products, including:

- △ Personal protection gear
- △ Arc flash protection
- △ Composite and insulated tooling
- △ Safety harnesses and lanyards
- △ And more





ARC FLASH PROTECTION CLOTHING

Arc Flash Protection Clothing is flame-resistant clothing that keeps you cool when working in high heat. We offer a variety of arc flash protection including coveralls, gloves, hats, parkas, glasses, shields, t-shirts, bags, helmets, flame-resistant lab cotas, and flame-retardant hoods.



COMPOSITE & INSULATED TOOLING

Composite & Insulated Tools are sold individually as well as in rolls and box sets. We carry strippers, crimpers, wrenches, pliers, cutters, joint tools, adjustable wrenches, screwdrivers, nut drivers, sockets, ratchets, and more.



INSULATED GLOVES

Insulated Gloves allow you to work in areas with low and high voltage. We carry various sizes and lengths that come in different safety classes and kits. Our insulated gloves meet legal requirements and reduce on-the-job injuries.



INSULATED SAFETY ACCESSORIES

Insulated Accessories include 7.5 KV PVC Insulating Rolls, Electric Insulating Protective Shielding, Type I Insulating Blankets and Accessories, Glove Inflators, Sleeves, Rubber Goods Cleaner, Glove Liners, Hot Sticks, Dielectric Boots, Switchboard Corrugated Matting, Arc Rated Harnesses, Safety Rescue Hooks, Ground Sets, and Voltage Detector Kits.



TOOLING

TIRED OF REPLACING YOUR COBALT OR HSS OVER AND OVER?

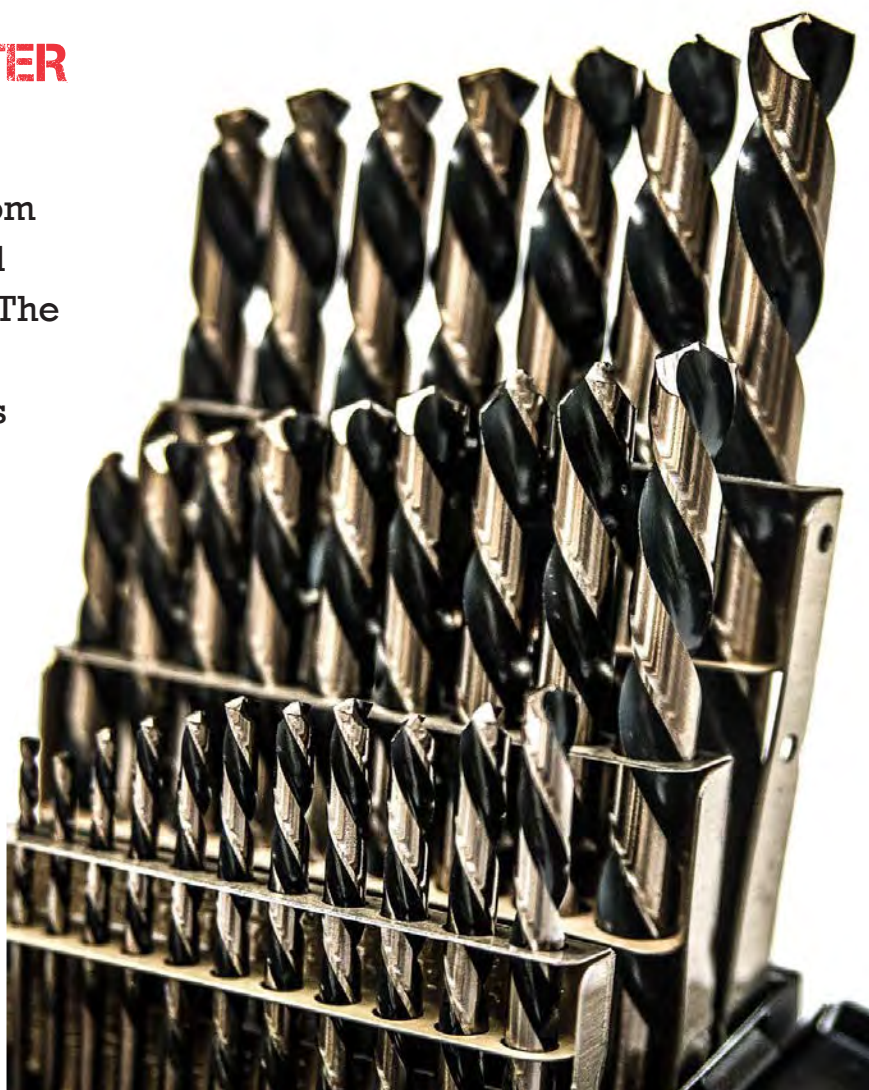
In an age where only a handful of American tooling manufacturers exist, we are proud to bring you high-quality, American-made Aerospace Standard NAS-907 tools.

Benefits of the Tri-Ultra Cut tooling line:

- △ Significantly longer cutting life
- △ Stops drill walking
- △ Runs cooler
- △ Uses less torque
- △ Holds tighter hole size
- △ Stops chuck slippage

BETTER MADE FOR BETTER PERFORMANCE

Our Tri-Ultra Cut line is made from special hi-molybdenum tool steel and heat treated to 66 Rockwell. The line features an oxidized black and gold surface, which provides maximum lubricity and higher heat handling. Thinner web construction means these tools will continually cut beneath the chip to cut softer steel.



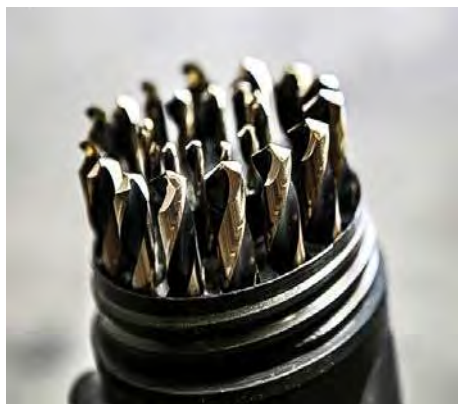
OUTLAST & OUTPERFORM COBALT EVERY TIME

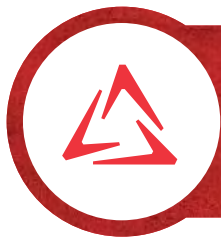
Our Tri-Ultra Cut drills will replace low-grade M35 5% Cobalt.

We're not limited to only our Tri-Ultra Cut tooling line. We also provide a wide variety of other tooling and tool-related supplies and equipment, including:

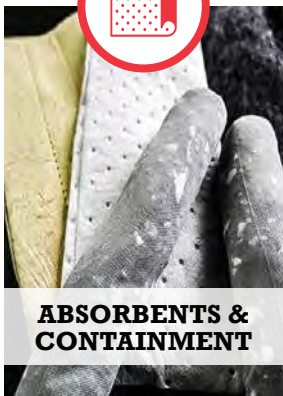
- △ Carbide burs
- △ Boring bars
- △ Saw blades
- △ Machine tool accessories
- △ Inserts
- △ Cut-off grooving
- △ Cabinets
- △ Holders
- △ And more

Talk to our knowledgeable tooling staff today—we can help you find better performing tools for your unique application and environment.





TRI-CHEM



ABSORBENTS & CONTAINMENT



ANTI-FATIGUE MATTING



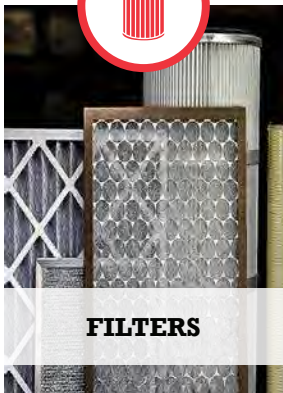
CLEANERS & DEGREASERS



COATINGS & SEALERS



COOLANTS & LUBRICANTS



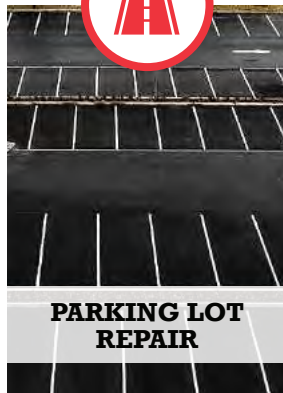
FILTERS



GLOVES



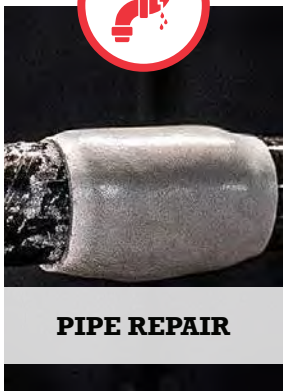
GREEN PRODUCTS



PARKING LOT REPAIR



PATCH



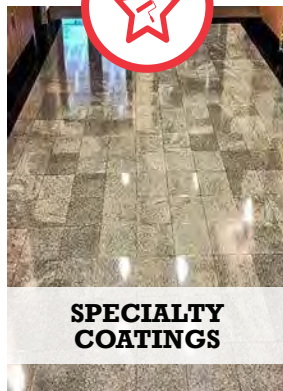
PIPE REPAIR



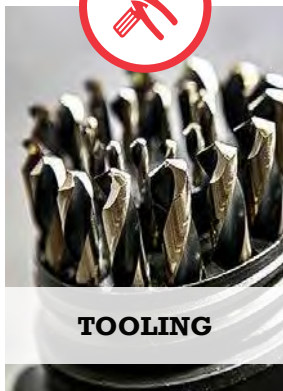
ROOF REPAIR



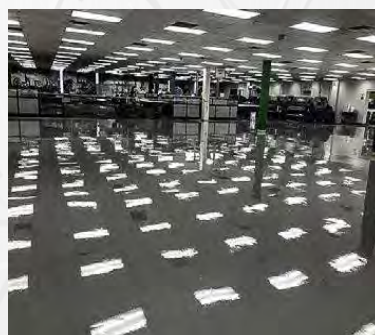
SAFETY SUPPLIES & EQUIPMENT



SPECIALTY COATINGS



TOOLING



800.456.6255 | tri-chem.com